

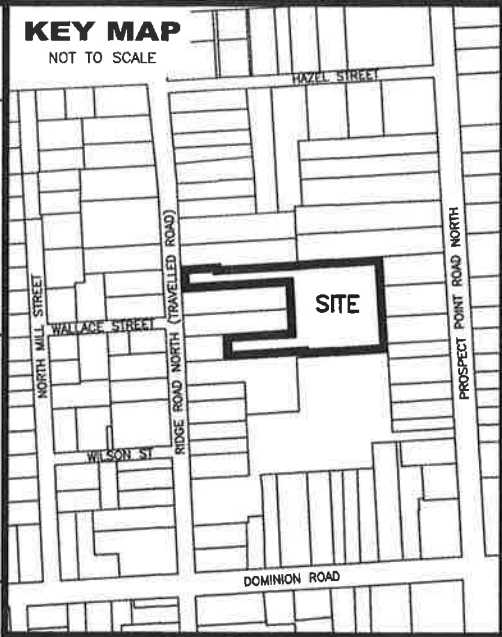
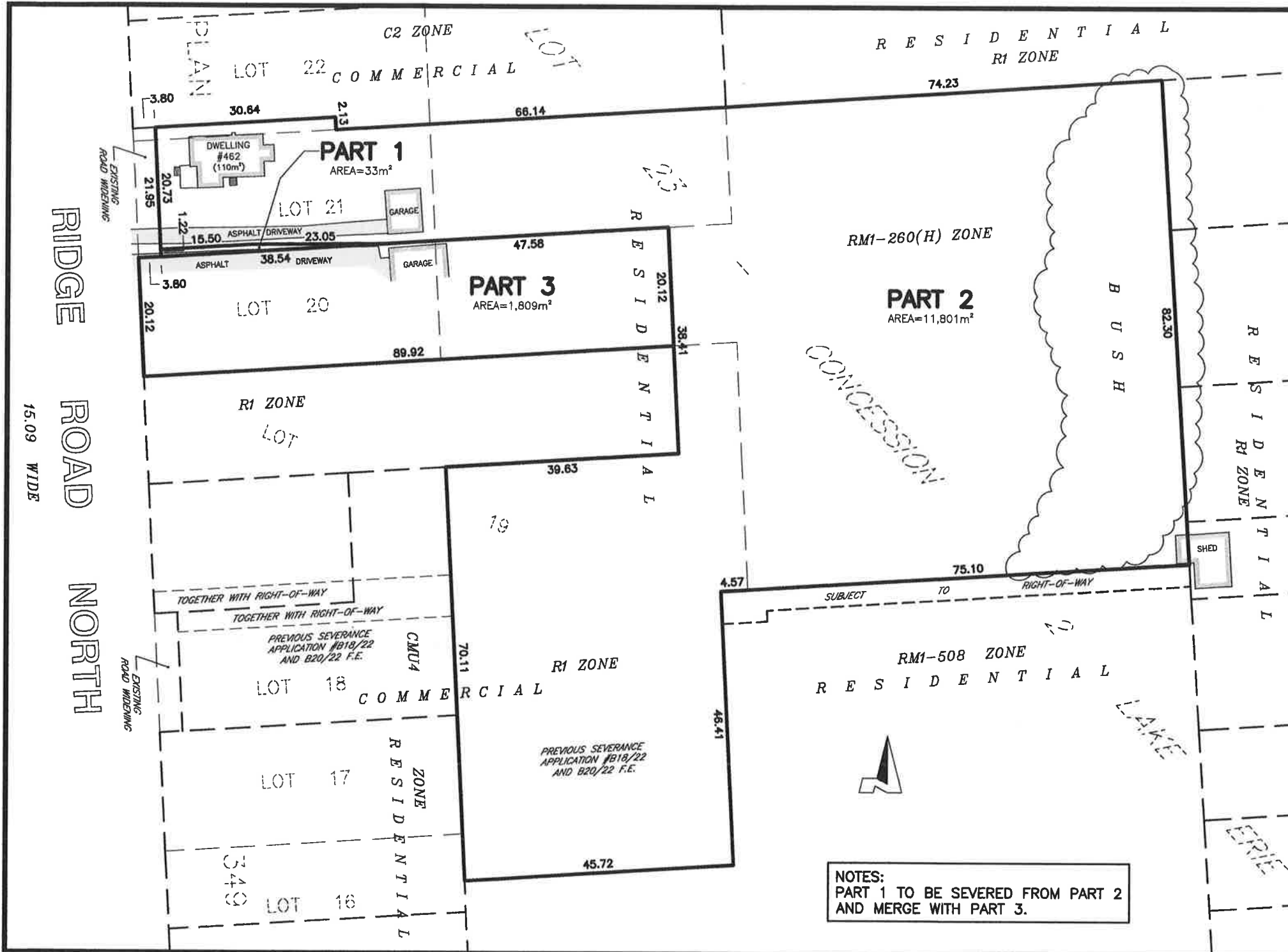
SKETCH
PREPARED FOR SEVERANCE APPLICATION
PART OF LOTS 19, 21 AND 22
ON THE EAST SIDE OF RIDGE
ROAD - PLAN 349,
AND PART OF LOT 23,
CONCESSION 2 LAKE ERIE
GEOGRAPHIC TOWNSHIP OF BERTIE
IN THE
TOWN OF FORT ERIE
REGIONAL MUNICIPALITY OF NIAGARA
SCALE 1 : 800 (METRIC)

NOTE: THIS SKETCH IS PREPARED FROM COMPILED AND
CALCULATED INFORMATION, NOT FROM AN ACTUAL SURVEY.
DO NOT SCALE FROM THIS DRAWING.
ALL MEASUREMENTS ARE +/- MEASUREMENTS.
"THIS IS NOT AN ORIGINAL COPY UNLESS EMBOSSED WITH SEAL"
CAUTION: THIS IS NOT A PLAN OF SURVEY AND SHALL NOT BE
USED EXCEPT FOR THE PURPOSE INDICATED IN THE TITLE BLOCK.

© **COPYRIGHT 2025**
THE REPRODUCTION, ALTERATION OR USE OF THIS SKETCH, IN
WHOLE OR IN PART WITHOUT THE EXPRESS WRITTEN PERMISSION OF
CHAMBERS AND ASSOCIATES SURVEYING LTD. IS STRICTLY PROHIBITED.

May 1, 2025
DATE DONALD G. CHAMBERS, B. Sc., O.L.S.
CHAMBERS AND ASSOCIATES
SURVEYING LTD
12 THOROLD ROAD EAST (905) 735-7841 / 735-7844
WELLAND ONTARIO L3C-3T2 www.casl-surveying.com
DWG 21044_SEV5 FILE 21-44

NOTES:
PART 1 TO BE SEVERED FROM PART 2
AND MERGE WITH PART 3.



SKETCH
PREPARED FOR SEVERANCE APPLICATION
PART OF LOTS 19, 21 AND 22
ON THE EAST SIDE OF RIDGE
ROAD - PLAN 349,
AND PART OF LOT 23,
CONCESSION 2 LAKE ERIE
GEOGRAPHIC TOWNSHIP OF BERTIE
IN THE
TOWN OF FORT ERIE
REGIONAL MUNICIPALITY OF NIAGARA
SCALE 1 : 800 (METRIC)

NOTE: THIS SKETCH IS PREPARED FROM COMPILED AND
CALCULATED INFORMATION, NOT FROM AN ACTUAL SURVEY.
DO NOT SCALE FROM THIS DRAWING.
ALL MEASUREMENTS ARE +/- MEASUREMENTS.
"THIS IS NOT AN ORIGINAL COPY UNLESS EMBOSSED WITH SEAL"
CAUTION: THIS IS NOT A PLAN OF SURVEY AND SHALL NOT BE
USED EXCEPT FOR THE PURPOSE INDICATED IN THE TITLE BLOCK.

© **COPYRIGHT 2025**
THE REPRODUCTION, ALTERATION OR USE OF THIS SKETCH, IN
WHOLE OR IN PART WITHOUT THE EXPRESS WRITTEN PERMISSION OF
CHAMBERS AND ASSOCIATES SURVEYING LTD. IS STRICTLY PROHIBITED.

May 1, 2025 *Don Chambers*
DATE DONALD G. CHAMBERS, B. Sc., O.L.S.
CHAMBERS AND ASSOCIATES
SURVEYING LTD
12 THOROLD ROAD EAST (905) 735-7841 / 735-7844
WELLAND ONTARIO L3C-3T2 www.cas1-surveying.com
DWG **21044_SEV5** FILE **21-44**

NOTES:
PART 1 TO BE SEVERED FROM PART 2
AND MERGE WITH PART 3.

