



April 14, 2025

**Devon M. Morton, MCIP, RPP**  
Supervisor of Development Approvals  
Town of Fort Erie  
Planning, Building and By-law Services  
1 Municipal Centre Drive  
Fort Erie, ON L2A 2S6

Dear Sir,

We thank you for your letters and information packages which were well received.

We understand that a severance and sale process is contemplated for 1011 Gilmore Road, Fort Erie, Ontario (the “**Target Property**”), a property located close to Airbus Helicopters Canada’s location at 1100 Gilmore Road (“**Airbus Location**”).

You have asked for our consent and/or comments relating to the same.

We wish to advise that we do not object to the severance and sale process of the Target Property, to the extent Airbus Helicopters Canada operations can continue unimpeded.

As you know, Airbus Helicopters Canada has been operating out of the Airbus Location for more than 40 years, and has been an integral employer and member of the community.

Airbus Helicopters Canada’s operations have always included test flying aircraft with a flight path that is directly overhead of the Target Property. We attach our take-off or landing path, which depends on wind directions. From a more technical standpoint:

- Airbus Helicopters Canada’s aircraft fly as low as 100 ft above the ground over Gilmore Road
- Airbus Helicopters Canada’s aircraft fly as low as 500 ft above the ground at the south western edge (at QEW) of the Target Property
- When an aircraft flies below a height of 500 ft, the pilot cannot manoeuvre it in the case of an engine flameout

Airbus Helicopters Canada wishes and intends to continue these test flying operations in compliance with Transport Canada regulations.

For a neighbour at the Target Property, there are noise considerations (around 90 decibels for aircraft flown) to be taken into account in any project contemplated, as the Airbus Location houses a working manufacturing and aircraft testing facility. Also, there is some risk of danger, in

that in the highly unlikely event of an incident with an aircraft, such aircraft could be directly above a new facility that may be erected on the Target Property.

While we would like to accommodate a new neighbour in the Target Property, please also note that the flight path cannot be changed due to geographic limitations:

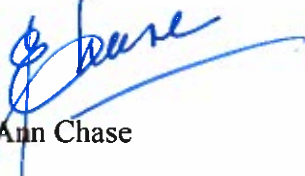
- the location of Airbus Helicopter Canada's manufacturing and operations building at the Airbus Location
- the height of the trees on the west side of the Airbus Location, which is protected by laws relating to wetland

The Town of Fort Erie has been a wonderful partner of Airbus Helicopters Canada for many years, and we are very grateful for all of your support. We trust that we can, together, find a path forward for the Target Property that will ensure the growth of Fort Erie, as well as maintaining Airbus Helicopters Canada operations.

We invite you to communicate with us at your convenience in respect of next steps, and kindly request that you continue to consult us to ensure mutual success, and ultimately, success for all residents of Fort Erie.

Sincerely,

AIRBUS HELICOPTERS CANADA LTD.

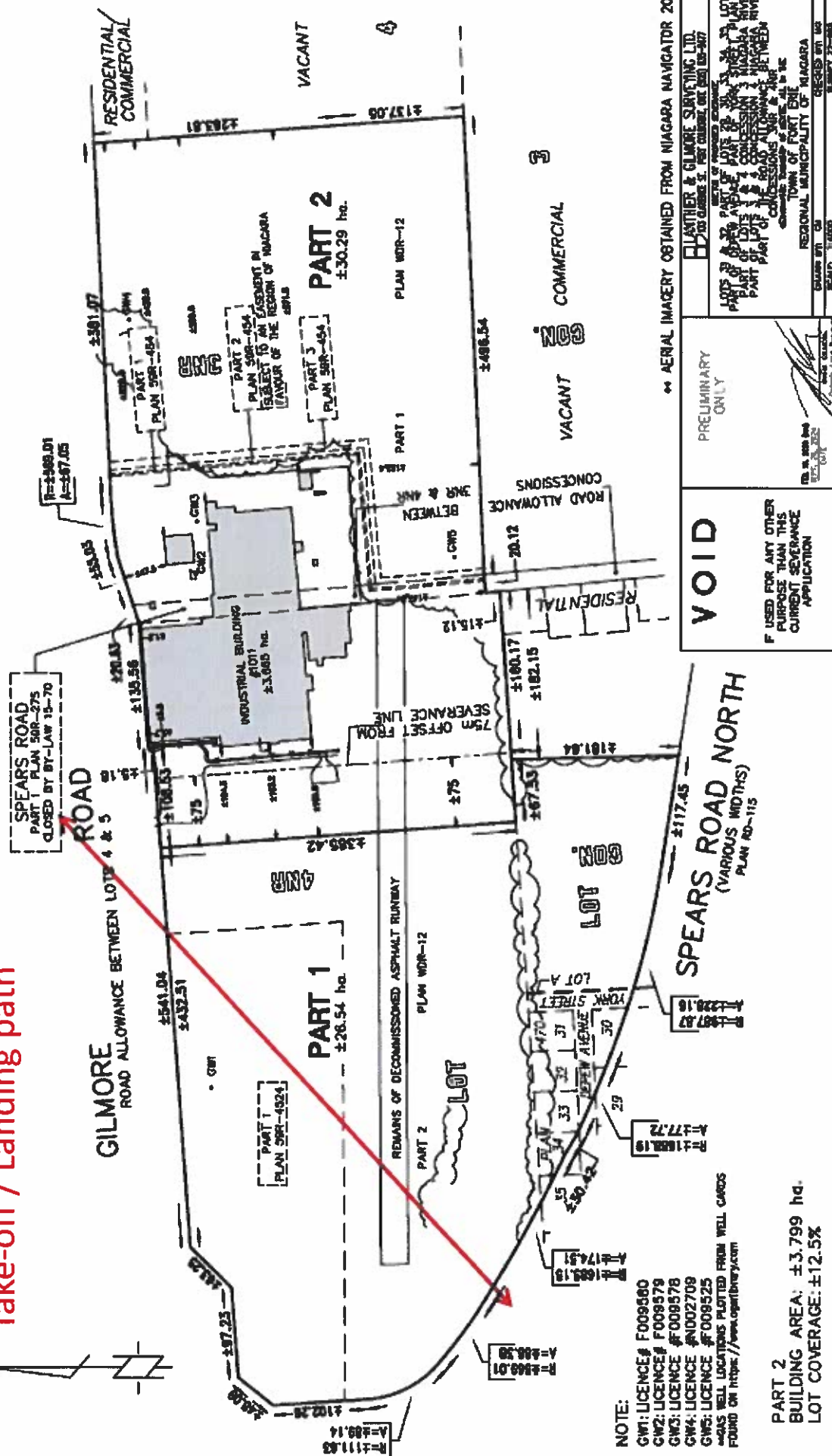


Carol-Ann Chase

Director, Strategy & Transformation/Facilities Mgmt.

THIS IS NOT A PLAN OF SURVEY AND SHALL NOT BE USED FOR ANY PURPOSE OTHER THAN CURRENT SEVERANCE APPLICATION. © THIS SKETCH IS PROTECTED BY COPYRIGHT.

## Take-off / Landing path



--- AERIAL IMAGERY OBTAINED FROM NIAGARA NAVIGATOR 2023

PRELIMINARY ONLY

**void**

IF USED FOR ANY OTHER  
PURPOSE THAN THIS  
CURRENT SEVERANCE  
APPLICATION

PRELIMINARY ONLY

[illegible]

WATSON  
CHECKED WITH ME  
USW 22-000

REGIONAL MUNICIPALITY OF

DATE \_\_\_\_\_  
BY \_\_\_\_\_  
RECEIVED \_\_\_\_\_

[illegible]

APPLICATION

